

iVMS-4500(BlackBerry) Installation Guide

1. Environment

BlackBerry Device: 9000 bold

BlackBerry OS: V5.0.0.464

Desktop Manager: V4.7.0.37

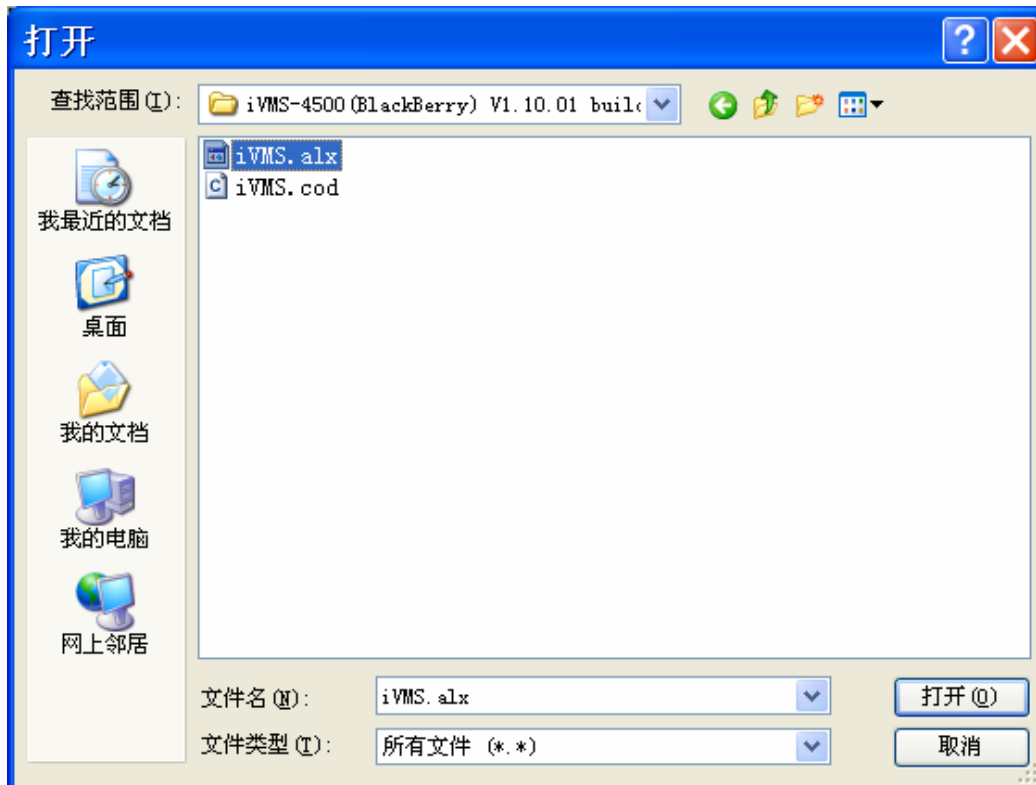
2. Setup

2.1 Install Desktop manager software

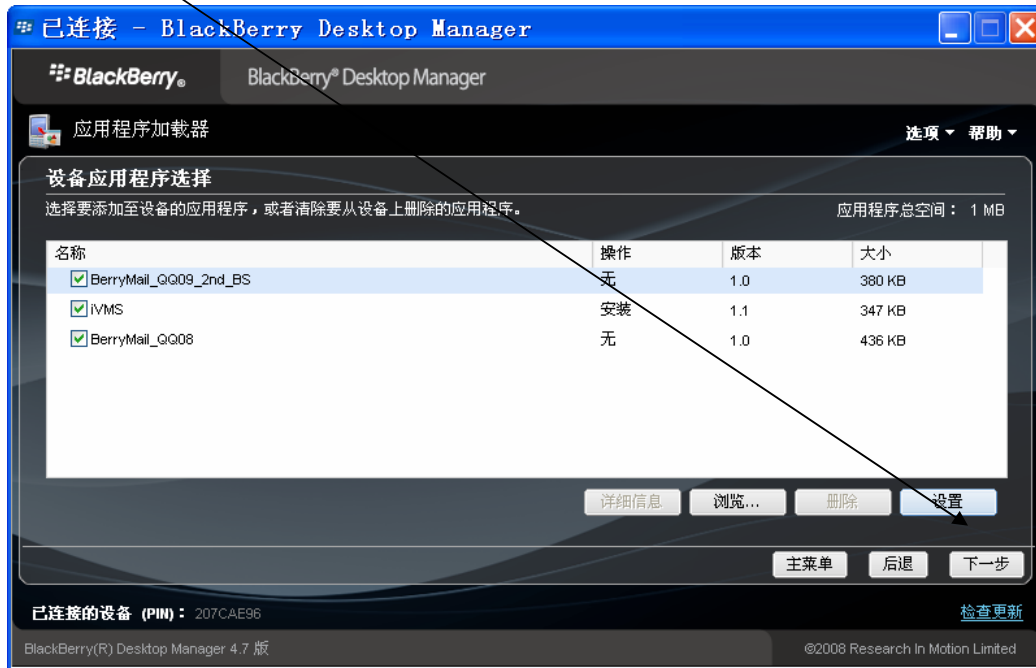
2.2 Run the desktop manager software after you finish the installation, select *App Loader*.



2.3 Click “Browse” to select the “.alx” file.



2.4 Next.



2.5 Click "Finish" to enter the mobile client installation.

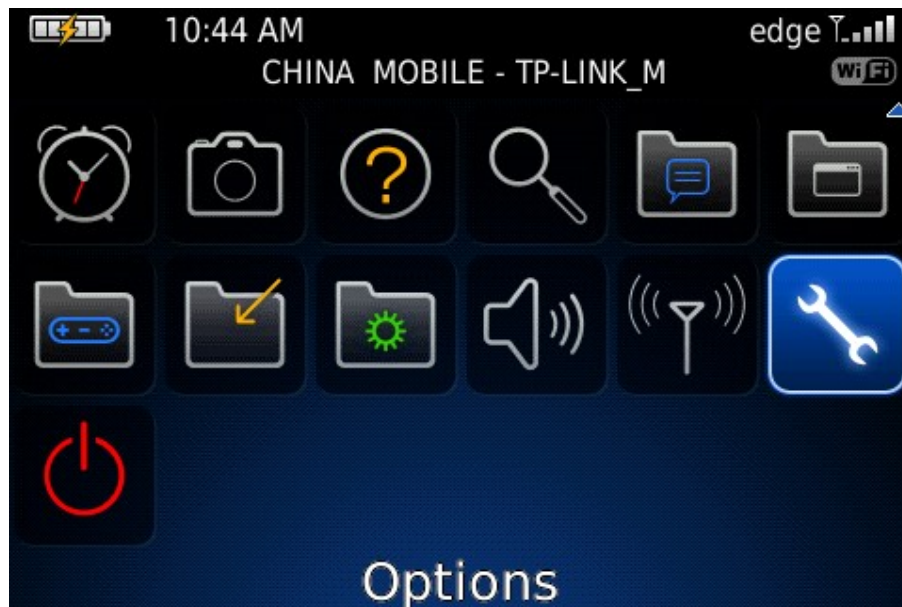




3. Configuration

3.1 Firewall Config

Open **【Options】**:



Select **【Security Options】**:

- Options
- Custom Dictionary ▲
- Date/Time
- Language and Text Input
- Memory
- MMS
- Mobile Network
- Owner
- Password
- Phone Options
- Screen/Keyboard
- Security Options
- SMS ▼

Select **Firewall**:

- Security Options
- Advanced Security Options
- Encryption
- Firewall
- Information
- Security Wipe
- S/MIME

Set FireWallto be **Disable** status

Firewall

Status: Disabled ▼

Block Incoming Messages

<input type="checkbox"/> SMS	0 blocked
<input type="checkbox"/> MMS	0 blocked
<input type="checkbox"/> PIN	0 blocked
<input type="checkbox"/> BlackBerry Internet Service	0 blocked
<input type="checkbox"/> Enterprise email	0 blocked

Except messages from

- Contacts
- Specific addresses

3.2 Set Permission

【Options】 -> 【Applications】:





Options

- About
- Advanced Options
- Applications**
- Auto On/Off
- AutoText
- Bluetooth
- Custom Dictionary
- Date/Time
- Language and Text Input
- Memory
- MMS
- Mobile Network ▼


Select 【iVMS-4500】:

Applications: Third Party ▾

Find:

	BlackBerryQQ Tencent	10.0.20
	GPS Demo Research In Motion Ltd.	0.9
	Hello BlackBerry Developer	1.0.0
	iVMS-4500 JBenchmark	1.1

Click **【Edit Permissions】**:


iVMS-4500
 Application Properties

Title:	iVMS-4500
Version:	1.1
Vendor:	JBenchmark

Delete
Edit Permissions

Description:	iVMS converted by Txt2Cod 1.0
Copyright:	Copyright (c) 2006 Cheng Min
Installed:	Jun 8, 2010 12:30 PM
Size:	358552 Bytes
Signature:	This application is not signed

Default Value:

Permissions: iVMS-4500

RIM | MIDP groups | MIDP JSRs

+Connections Custom ▾

+Interactions Custom ▾

+User Data Allow ▾

Application Modules
iVMS

Change to:

Permissions: iVMS-4500

RIM | MIDP groups | MIDP JSRs

+Connections Allow ▾

+Interactions Allow ▾

+User Data Allow ▾

Application Modules
iVMS

3.3 APN Setting

【Options】 -> 【Advanced Options】:

Options

About

Advanced Options

Applications

Auto On/Off

AutoText

Bluetooth

Custom Dictionary

Date/Time

Language and Text Input

Memory

MMS

Mobile Network

Select **【TCP/IP】** or **【TCP】**:

Advanced Options

Accessibility

Browser

Browser Push

Cell Broadcast Settings

Default Services

Enterprise Activation

GPS

Host Routing Table

Maps

Service Book

SIM Card

TCP/IP

Set APN of local ISP

TCP/IP

APN Settings Enabled

APN:

APN Authentication Enabled

Username for APN: cmnet

Password for APN:

Note: please ask for the user name of APN form the local ISP